

P395

COMMERCIAL PAVER



BUILT FOR HIGH PRODUCTION.

Engineered and built to exceed the demands of commercial paving, the Weiler P395 incorporates proven designs with new innovations to provide performance, reliability and outstanding mat quality in a wide range of applications.



PROVEN SCREED.

The Weiler designed 4,400 lb (1996 kg) screed delivers outstanding mat quality and a wide paving range. The 7' 8" (2.3 m) front mount screed is hydraulically extendable to 15' 4" (4.67 m).



LARGEST UNDERCARRIAGE.

Best-in-class 96" (2438 mm) track length with 74" (1880 mm) of ground contact and 140 mm track chain pitch provides smooth ride and excellent flotation. Automatic track tensioning ensures performance and maximizes component life.



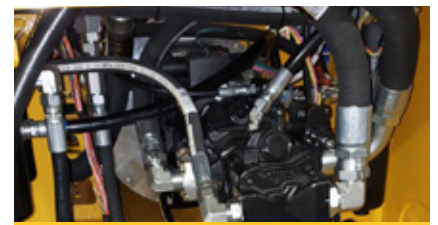
VISIBILITY AND CONTROL.

The P395 has swing out consoles for optimal visibility while the adjustable, magnetic-resistance intelligent steering system allows for reliable control. The joystick allows for automatic functions.



DURABLE COMPONENTS.

Highway class chains, conveyor and auger bearings provide long-term reliability. Remote grease lines located on the front of the counterweight provide easy daily maintenance.



FAST SERVICE.

Remote grease lines, spray down system with 4-10' (1.2 - 3.0 m) coiled hoses. Hinged engine access doors and Caterpillar dealer service and support keep your machine up and running.

P395 SPECIFICATIONS

WEIGHT	25,000 lb	11 340 kg	SCREED WEIGHT	4,400 lb	1996 kg	ENGINE	Cat® C3.6 Tier 4F/Stage V	
LENGTH	15' 2"	4623 mm	MAIN PLATE WIDTH	16.5"	419 mm	PAVING SPEED	150 fpm	45 mpm
WIDTH	102"	2591 mm	EXTENSION PLATE WIDTH	10"	254 mm	TRANSPORT SPEED	350 fpm	106 mpm
HEIGHT	100"	2540 mm	SCREED HEAT	Electric - 4 elements		FUEL CAPACITY	39 gal	148 L
TRUCK CLEARANCE	19"	482 mm	VIBRATION	4 x 2500 vpm max		HYDRAULIC CAPACITY	30 gal	114 L
AUGER DIAMETER	14"	356 mm	AUGER SPEED	150 rpm max		DEF CAPACITY	5 gal	18 L

POWERTRAIN

Cat® C3.6 Tier 4F/Stage V engine with 120 hp (89 kW)
3-Speed hydrostatic drive, 350 fpm (106 mpm) transport speed
Automatic track tensioning
96" (2438 mm) track length with 74" (1880 mm) of ground contact
14" (356 mm) bolt on, polyurethane track pads
7 track rollers per side w/1 carrier roller
140 mm track chain pitch
Hydraulically driven 12 kW generator

OPERATING ENVIRONMENT

Dual, swing-out operating stations
Air ride seats
Push button keypads
Dual LCD display provides conditions and diagnostics
Pause mode enables return to same settings
Steering wheel standard
Screed mounted control panels

MATERIAL DELIVERY

11-ton (10 mt) hopper
Replaceable floor plates
Heavy-duty chains and flight bars
Narrow chain guards
14" (356 mm) Ni-hard augers
Adjustable push roller
Independent, fully proportional and reversing auger and conveyor
Cut-off doors
Hydraulic dumping front apron

SALES AND SERVICE

Sold and serviced exclusively through Caterpillar dealers worldwide.

WWW.WEILERPRODUCTS.COM

SCREED

7' 8" (2.3 m) to 15' 4" (4.67 m) standard paving width
4 element electric heated screed w/ thermostatic control
3/8" (9.5 mm) thick screed plates
Hydraulic slope
Powered extension height
Sonic feed sensors
Hydraulic crown adjustment (+3%)
Folding rear walkways
Adjustable, springloaded end gates
Heated end gates

SERVICE/MAINTENANCE

8-gal (30 L) spray down system with 4 hoses/nozzles
Braided electrical harnesses and sealed connections
12-volt electric system with automotive-type fuses
Remote grease fittings
5 engine access doors
Lockable vandal covers and engine access doors

OPTIONAL EQUIPMENT

Truck hitch
Hydraulically extendable push rollers
DC LED blade lights
Auto grade and slope controls
Cut-off shoes
12" (305 mm), 18" (457 mm), 24" (610 mm) berm attachment
Hydraulic integrated berm

WARRANTY

12 months standard. Extended warranty available.