

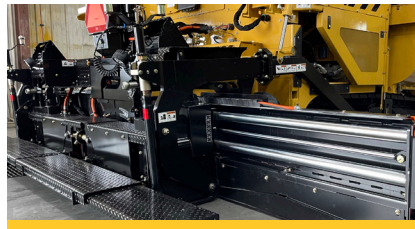
P385C

COMMERCIAL PAVER



BUILT FOR HIGH PRODUCTION.

Engineered and built to exceed the demands of commercial paving, the Weiler P385C incorporates proven designs with new innovations to provide performance, reliability and outstanding mat quality in a wide range of applications.



PROVEN SCREED.

The Weiler designed 3,700 lb (1678 kg) screed delivers outstanding mat quality and a wide paving range. The 8' (2.4m) front mount screed is hydraulically extendable to 15' 8" (4.80 m).



LARGEST UNDERCARRIAGE.

Best-in-class 90" (2286 mm) track length with 68" (1727 mm) of ground contact and 140 mm track chain pitch provides smooth ride and excellent flotation. Automatic track tensioning ensures performance and maximizes component life.



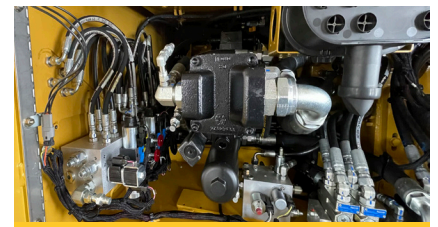
VISIBILITY AND CONTROL.

The P385C has three different operating positions allowing for optimal visibility while the adjustable, magnetic-resistance intelligent steering system allows for reliable control.



DURABLE COMPONENTS.

Highway class chains, conveyor and auger bearings provide long-term reliability. Remote grease lines located on the front of the counterweight provide easy daily maintenance.



FAST SERVICE.

Remote grease lines, spray down system with three coiled hoses and timer, five engine access doors and Caterpillar dealer service and support keep your machine up and running.

P385C SPECIFICATIONS

WEIGHT	20,500 lb	9299 kg	SCREED WEIGHT	3,700 lb	1678 kg	ENGINE	Cat® C3.6 Tier 4F/Stage V	
LENGTH	14' 8"	4470 mm	MAIN PLATE WIDTH	16.5"	419 mm	PAVING SPEED	150 fpm	45 mpm
WIDTH	102"	2591 mm	EXTENSION PLATE WIDTH	9"	228 mm	TRANSPORT SPEED	350 fpm	106 mpm
HEIGHT	76"	1930 mm	SCREED HEAT	Electric - 4 elements		FUEL CAPACITY	40 gal	151 L
TRUCK CLEARANCE	19"	482 mm	VIBRATION	2 x 2500 vpm		HYDRAULIC CAPACITY	30 gal	114 L
AUGER DIAMETER	12"	305 mm	AUGER SPEED	150 rpm - variable		DEF CAPACITY	5 gal	18 L

POWERTRAIN

Cat® C3.6 Tier 4F/Stage V engine with 120 hp (90 kW)
3-Speed hydrostatic drive, 350 fpm (106 mpm) transport speed
Automatic track tensioning
90" (2,286 mm) track length with 68" (1,727 mm) of ground contact
14" (356 mm) performance, poly track pads
6 track rollers per side
140 mm track chain pitch
Hydraulically driven 12 kW generator

OPERATING ENVIRONMENT

Dual operating stations
3 operating positions - high, mid and screed
Push button keypads
LCD display provides conditions and diagnostics
Pause mode enables return to same settings
Steering wheel standard, propel levers optional
Optional screed mounted control panels
LED strobe and works lights

MATERIAL DELIVERY

9-ton (8.1 mt) hopper
Replaceable floor plates
Heavy-duty chains and flight bars
Narrow chain guards
12" (305 mm) Ni-hard augers,
Adjustable push roller
Variable speed and reversible augers and conveyors
Cut-off doors
Hydraulic tow points

SALES AND SERVICE

Sold and serviced exclusively through Caterpillar dealers worldwide.

WWW.WEILERPRODUCTS.COM

SCREED

8' (2.44 m) to 15'8" (4.80 m) standard paving width (17' 8" max)
4 element electric heated screed w/ thermostatic control
3/8" (9.5 mm) thick screed plates
Grade and slope controls
Sonic feed sensors
Manual crown adjustment (+-3%)
Folding rear walkways
Spring loaded end gates w/ heated shoes

SERVICE/MAINTENANCE

8 gal (30 L) spray down system with 3 hoses/nozzles
Braided electrical harnesses and sealed connections
12-volt electric system with automotive-type fuses
Remote grease fittings
5 engine access doors
Lockable vandal covers and engine access doors

OPTIONAL EQUIPMENT

Truck hitch
Hydraulically extendable push rollers
Umbrella
Additional operator seat
Second Steering Indicator Group
Propel levers
DC LED blade lights
Screed mounted control panels
Hand held remote
Auto grade and slope controls
Electric screed extension height adjustment
Power hydraulic slope
Hydraulic power crown
Cut-off shoes
12" (305 mm), 18" (457 mm), 24" (610 mm) bolt- on berm attachment
12" and 18" hydraulic integrated berm
Auger & tunnel extensions
1' heated bold-on screed extensions

WARRANTY

12 months standard. Extended warranty available.